

KRION-IN (Model)



TECHNICAL INFORMATION

[IES Files](#) ↓

Watt	20W – 80W
Luminaire	Up to 8300lm
CCT	3000K – RGBW
CRI	>80
Wiring	120-277V 60Hz / 0-10V, 120-277V 60Hz RDM/DMX
LED life time	> 60000h - L80 - B20 (Ta 25°C)
Color	Aluminium - 21 / Grey - 16

DESCRIPTION

Construction

- Extruded aluminium body.
- Die-cast aluminium caps (EN 47100).
- Double layer polyester powder paint resistant to corrosion and salt spray fog.
- Silicone rubber gaskets.
- AISI 316 stainless steel external screws.

Electrical & Optics

- 0-10V dimming available.
- High-efficacy LEDs with standard 3000K, 4000K (2700K or other CCTs available on request).
- PMMA lenses for LEDs.
- Screen made of 5/16" thermal-shock resistant tempered glass.

Listings

- UL certified to U.S. and Canadian standards, suitable for wet locations (cULus mark).
- Rated IP67 per EN60598.
- Luminaire rated for -20°C minimum ambient.
- 1000Kg static load capacity per EN60598.
- High quality LED sources characterized according to IES TM-30, with high color consistency <3SDCM and long useful life >60000 hours at L80.

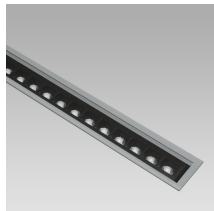
Installation

- Recessed installation.
- Double cable gland M20 for through wiring.
- Steel spring clips.
- Supplied with extruded aluminium recessed box.
- End caps to be ordered separately (1099129X).

IP67



VERSIONS *(Click on below link to configure your product)*



[performance+](#)

Size:

2" 3/4

5" 19/32

13" 5/8 to 48" 7/32



OPTICS



See accessories in the next page

STRAIGHT JOINT.

Arcluce Code **1099241X**

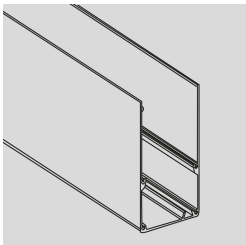
Code Ref.

**TECHNICAL INFORMATION****Weight** 0.02 lb

PAINTED EXTRUDED ALUMINIUM INSTALLATION-BOX

Arcluce Code **1099342X-21**

Code Ref.

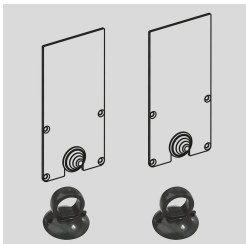
**TECHNICAL INFORMATION****Color** Aluminium - 21

Weight 1.57 lb

PAINTED STEEL ENDS AND SUCTION CAPS (2 PCS).

Arcluce Code **1099129X-21**

Code Ref.

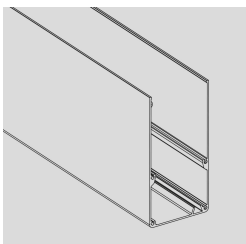
**TECHNICAL INFORMATION****Color** Aluminium - 21

Weight 0.44 lb

PAINTED EXTRUDED ALUMINIUM INSTALLATION-BOX

Arcluce Code **1099342X-16**

Code Ref.

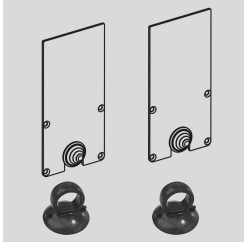
**TECHNICAL INFORMATION****Color** Grey - 16

Weight 1.57 lb

PAINTED STEEL ENDS AND SUCTION CAPS (2 PCS).

Arcluce Code **1099129X-16**

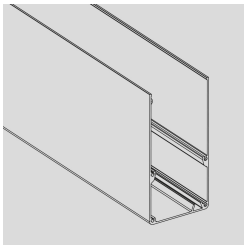
Code Ref.

**TECHNICAL INFORMATION****Color** Grey - 16**Weight** 0.44 lb

PAINTED EXTRUDED ALUMINIUM INSTALLATION-BOX

Arcluce Code **1099343X-21**

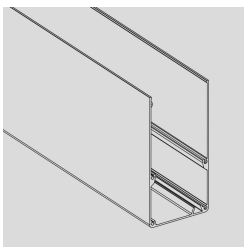
Code Ref.

**TECHNICAL INFORMATION****Color** Aluminium - 21**Weight** 2.87 lb

PAINTED EXTRUDED ALUMINIUM INSTALLATION-BOX

Arcluce Code **1099343X-16**

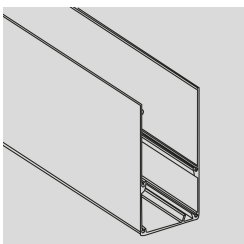
Code Ref.

**TECHNICAL INFORMATION****Color** Grey - 16**Weight** 2.87 lb

PAINTED EXTRUDED ALUMINIUM INSTALLATION-BOX

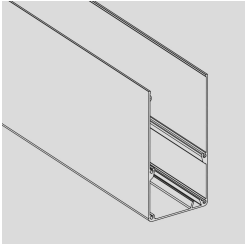
Arcluce Code **1099344X-21**

Code Ref.

**TECHNICAL INFORMATION****Color** Aluminium - 21**Weight** 5.51 lb

PAINTED EXTRUDED ALUMINIUM INSTALLATION-BOXArcluce Code **1099344X-16**

Code Ref.

**TECHNICAL INFORMATION****Color** Grey - 16**Weight** 5.51 lbArcluce Code **1098009X**

Code Ref.

**TECHNICAL INFORMATION****Weight** 1.1 lbArcluce Code **1098010X**

Code Ref.

**TECHNICAL INFORMATION****Weight** 1.1 lb