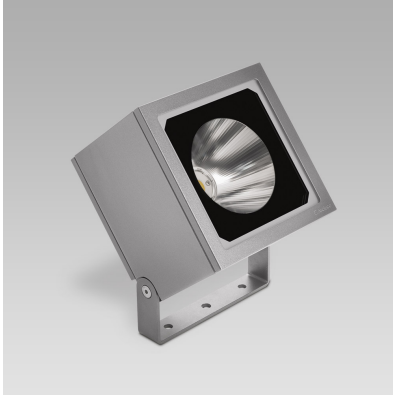


# PIXOL200 (Model)



## TECHNICAL INFORMATION

[IES Files](#) 

<b>Watt</b>	25W – 42W
<b>Luminaire</b>	Up to 5100lm
<b>CCT</b>	3000K – RGBW
<b>CRI</b>	>80
<b>Wiring</b>	120-277V 60Hz 0-10V,
<b>LED life time</b>	> 60000h - L80 - B20 (Ta 25°C)
<b>Color</b>	Grey - 16 / Aluminium - 21

## DESCRIPTION

### Construction

- Die-cast aluminium body and trim (EN 47100).
- Double layer polyester powder paint resistant to corrosion and salt spray fog.
- Silicone rubber gaskets.
- AISI 316 stainless steel external screws.

### Electrical & Optics

- Universal input voltage: 120-277V 50/60Hz.
- 0-10V dimming available.
- Driver protected against voltage surges up to 5kV.
- Wiring on removable galvanized steel tray.
- High-efficacy LEDs with standard 3000K, 4000K (2700K or other CCTs available on request).
- Reflector made of engineering plastic metalized in high-vacuum.
- PMMA lenses for LEDs for RGBW versions.
- Screen made of 3/16" thermal-shock resistant tempered glass.

### Listings

- UL certified to U.S. and Canadian standards, suitable for wet locations (cULus mark).
- Rated IP66 per EN60598.
- Luminaire rated for -25°C minimum ambient temperature.
- High quality LED sources characterized according to IES TM-30, with high color consistency <3SDCM and long useful life >60000 hours at L80.

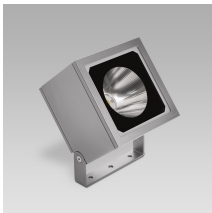
### Installation

- Surface installation.
- Galvanized and painted steel bracket.
- Supplied with power cord (18AWG conductors).
- Possibility for double cable gland M20 for through wiring.

IP66



## VERSIONS *(Click on below link to configure your product)*


[performance](#)

Size:

9" 27/32

6" 5/16

7" 7/8

## OPTICS

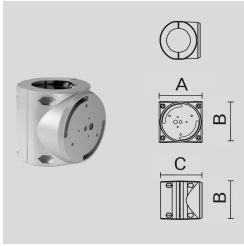


See accessories in the next page

## PAINTED DIE-CAST ALUMINIUM AND STEEL SINGLE POLE ATTACHMENT (Ø 102 MM).

Arcluce Code **1099472X-16**

Code Ref.

**TECHNICAL INFORMATION**

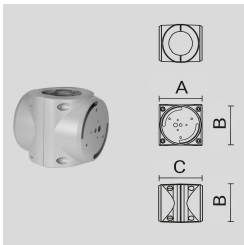
<b>Color</b>	Grey - 16
--------------	-----------

<b>Weight</b>	3.75 lb
---------------	---------

## PAINTED DIE-CAST ALUMINIUM AND STEEL DOUBLE POLE ATTACHMENT (Ø 102 MM) .

Arcluce Code **1099473X-16**

Code Ref.

**TECHNICAL INFORMATION**

<b>Color</b>	Grey - 16
--------------	-----------

<b>Weight</b>	4.63 lb
---------------	---------

## PAINTED STEEL SUPPORT BRACKET FOR ROOF EAVES.

Arcluce Code **1099154X-16**

Code Ref.

**TECHNICAL INFORMATION**

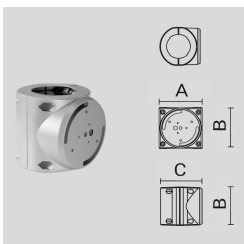
<b>Color</b>	Grey - 16
--------------	-----------

<b>Weight</b>	1.76 lb
---------------	---------

## PAINTED DIE-CAST ALUMINIUM AND STEEL SINGLE POLE ATTACHMENT (Ø 102 MM).

Arcluce Code **1099472X-21**

Code Ref.

**TECHNICAL INFORMATION**

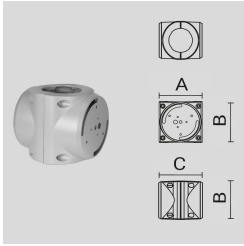
<b>Color</b>	Aluminium - 21
--------------	----------------

<b>Weight</b>	3.75 lb
---------------	---------

## PAINTED DIE-CAST ALUMINIUM AND STEEL DOUBLE POLE ATTACHMENT (Ø 102 MM) .

Arcluce Code **1099473X-21**

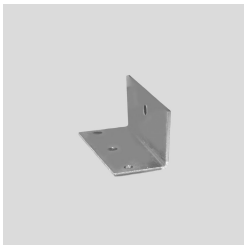
Code Ref.

**TECHNICAL INFORMATION****Color** Aluminium - 21**Weight** 4.63 lb

## PAINTED STEEL SUPPORT BRACKET FOR ROOF EAVES.

Arcluce Code **1099154X-21**

Code Ref.

**TECHNICAL INFORMATION****Color** Aluminium - 21**Weight** 1.76 lb