

QUAD200 (Model)



TECHNICAL INFORMATION

[IES Files](#) 

| | |
|---------------|---|
| Watt | 37W – 38W |
| Luminaire | Up to 4050lm |
| CCT | 3000K – 4000K |
| CRI | >80 |
| Wiring | 120-277V 60Hz / DALI, 120-277V 60Hz / 0-10V |
| LED life time | > 60000h - L80 - B20 (Ta 25°C) |
| Color | Stainless Steel - 30 |

DESCRIPTION

Construction

- Die-cast aluminium body (EN 47100).
- AISI 316L stainless steel trim.
- Die-cast aluminium control gear box (EN 47100).
- Double layer polyester powder paint resistant to corrosion and salt spray fog.
- Silicone rubber gaskets.
- AISI 316 stainless steel external screws.

Electrical & Optics

- 0-10V dimming available.
- Driver protected against voltage surges up to 6kV.
- Wiring on removable galvanized steel tray.
- High-efficacy LEDs with standard 3000K, 4000K (2700K or other CCTs available on request).
- PMMA lenses for LEDs.
- Screen made of 13/32" thermal-shock resistant tempered glass.

Listings

- UL certified to U.S. and Canadian standards, suitable for wet locations (cULus mark).
- Rated IP67 per EN60598.
- Luminaire rated for -40°C minimum ambient temperature.
- 1000-1500Kg static load capacity per EN60598.
- High quality LED sources characterized according to IES TM-30, with high color consistency <3SDCM and long useful life >60000 hours at L80.

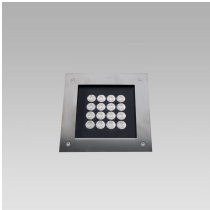
Installation

- Recessed installation.
- Supplied with galvanized and painted steel recessed installation box.
- Supplied with power cord (18AWG conductors).

IP67



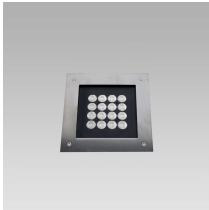
VERSIONS *(Click on below link to configure your product)*



[flush trim - recessed L box](#)

Size:

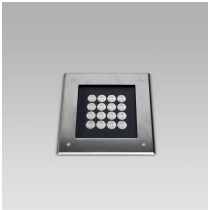
6" 23/32
13" 3/8
8" 11/16



[flush trim - recessed deep box](#)

Size:

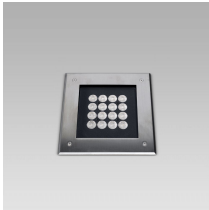
11" 11/32
7" 15/16
8" 11/16



[trim above the ground - recessed L box](#)

Size:

6" 9/16
13" 3/8
9" 1/16



[trim above the ground - recessed deep box](#)

Size:

11" 3/16
7" 15/16
9" 1/16

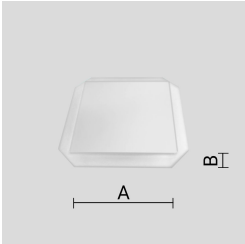
OPTICS



See accessories in the next page

ANTI-SLIP OPAL GLASS.

Arcluce Code **1099280X**
Code Ref.

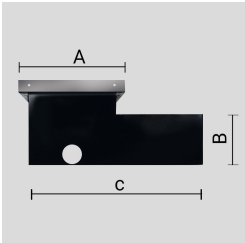


TECHNICAL INFORMATION

Weight 1.54 lb

"L-SHAPED" ZINC-COATED STEEL INSTALLATION-BOX WITH AISI 316L STAINLESS STEEL EDGE.

Arcluce Code **1099034X**
Code Ref.

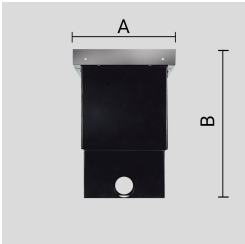


TECHNICAL INFORMATION

Weight 3.53 lb

ZINC-COATED STEEL INSTALLATION-BOX (LONG) WITH AISI 316L STAINLESS STEEL EDGE.

Arcluce Code **1099035X**
Code Ref.

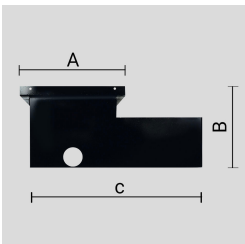


TECHNICAL INFORMATION

Weight 3.31 lb

"L-SHAPED" ZINC-COATED STEEL INSTALLATION-BOX.

Arcluce Code **1099234X**
Code Ref.

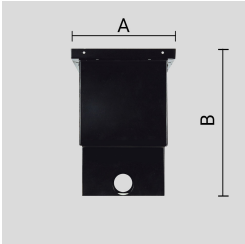


TECHNICAL INFORMATION

Weight 3.53 lb

ZINC-COATED STEEL INSTALLATION-BOX (LONG).

Arcluce Code **1099232X**
Code Ref.



TECHNICAL INFORMATION

| | |
|---------------|---------|
| Weight | 3.31 lb |
|---------------|---------|