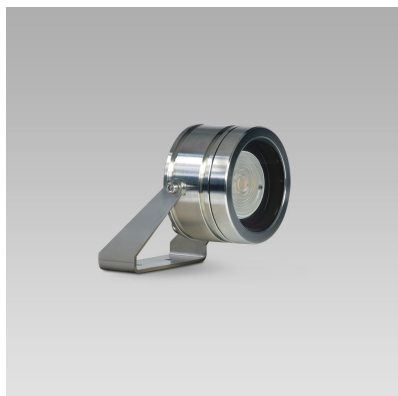


# TITO90 (Model)



## TECHNICAL INFORMATION

[IES Files](#) 

<b>Watt</b>	4W – 12W
<b>Luminaire</b>	Up to 1600lm
<b>CCT</b>	3000K – 4000K
<b>CRI</b>	>80
<b>Wiring</b>	24Vcd, 350mA
<b>LED life time</b>	> 60000h - L80 - B20 (Ta 25°C)
<b>Color</b>	Stainless Steel - 30

## DESCRIPTION

### Construction

- AISI 316L stainless steel body and trim.
- Silicone rubber gaskets.
- AISI 316 stainless steel external screws.

### Electrical & Optics

- High-efficacy LEDs with standard 3000K, 4000K (2700K or other CCTs available on request).
- PMMA lenses for LEDs.
- Screen made of 5/16" thermal-shock resistant tempered glass.

### Listings

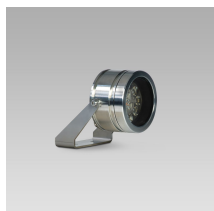
- UL certified to U.S. and Canadian standards, suitable for wet locations (cULus mark).
- Rated IP68 per EN60598.
- Luminaire rated for -40°C minimum ambient temperature.
- High quality LED sources characterized according to IES TM-30, with high color consistency <3SDCM and long useful life >60000 hours at L80.

### Installation

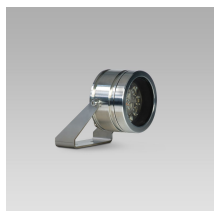
- Surface installation.
- AISI 316L stainless steel bracket.
- Supplied with power cord. 22AWG conductors.



## VERSIONS *(Click on below link to configure your product)*



[constant current](#)



[constant voltage](#)

Size:  
 Ø 3" 19/32  
 4" 1/4  
 4" 21/32

Size:  
 Ø 3" 19/32  
 4" 1/4  
 4" 21/32

## OPTICS

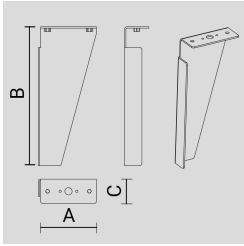


*See accessories in the next page*

## AISI 316L STAINLESS STEEL PEG.

Arcluce Code **1099329X**

Code Ref.

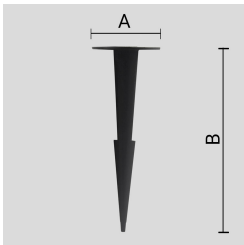
**TECHNICAL INFORMATION**

<b>Weight</b>	0.66 lb
---------------	---------

## THERMOPLASTIC MATERIAL PEG.

Arcluce Code **1099257X**

Code Ref.

**TECHNICAL INFORMATION**

<b>Weight</b>	0.11 lb
---------------	---------

## PAINTED AISI 316L STAINLESS-STEEL SLOPED VISOR.

Arcluce Code **1099328X-12**

Code Ref.

**TECHNICAL INFORMATION**

<b>Color</b>	Black - 12
--------------	------------

<b>Weight</b>	0.44 lb
---------------	---------

## AISI 316L STAINLESS-STEEL SLOPED VISOR.

Arcluce Code **1099375X-30**

Code Ref.

**TECHNICAL INFORMATION**

<b>Color</b>	Stainless Steel - 30
--------------	----------------------

<b>Weight</b>	0.44 lb
---------------	---------

PAINTED ALUMINIUM HONEYCOMB LOUVRE. TO BE ORDERED TOGETHER WITH THE LUMINAIRE.

Arcluce Code **1099348X-12**

Code Ref.

**TECHNICAL INFORMATION**

**Color** Black - 12

---

**Weight** 0.11 lb

---

PAINTED ALUMINIUM HONEYCOMB LOUVRE. TO BE ORDERED TOGETHER WITH THE LUMINAIRE.

Arcluce Code **1099341X-12**

Code Ref.

**TECHNICAL INFORMATION**

**Color** Black - 12

---

**Weight** 0.11 lb

---

Arcluce Code **1098009X**

Code Ref.

**TECHNICAL INFORMATION**

**Weight** 1.1 lb

---

Arcluce Code **1098010X**

Code Ref.

**TECHNICAL INFORMATION**

**Weight** 1.1 lb

---